

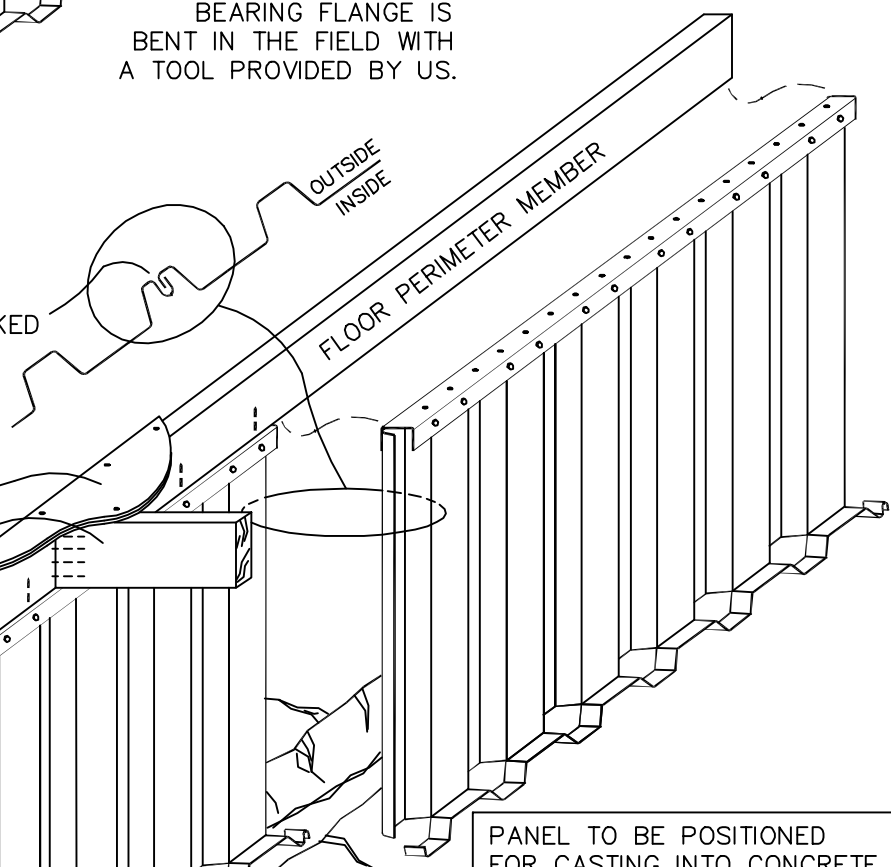
A TYPICAL PANEL VIEWED FROM THE BACK

- PANEL INSTALLATION SEQUENCE:**
1. POSITION A GUIDE MEMBER (SET MH UNITS)
 2. ATTACH PANELS (TO THE M.H. RIM-JOIST)
 3. PLACE CONCRETE IN FOOTING TRENCH

THE CAST-IN-PLACE PANEL IS CAPABLE OF BEARING-WALL LOADS IN THE THOUSANDS OF POUNDS PER LINEAL FOOT, PROVEN BY BOTH CALCULATION AND ICC-ER TESTING. FOR ENGINEERING DATA, PLEASE ASK.

THE ANCHORAGE/BEARING FLANGE IS BENT IN THE FIELD WITH A TOOL PROVIDED BY US.

INTERLOCKING JOINTS ARE CAULKED WITH WATERPROOF COMPOUND

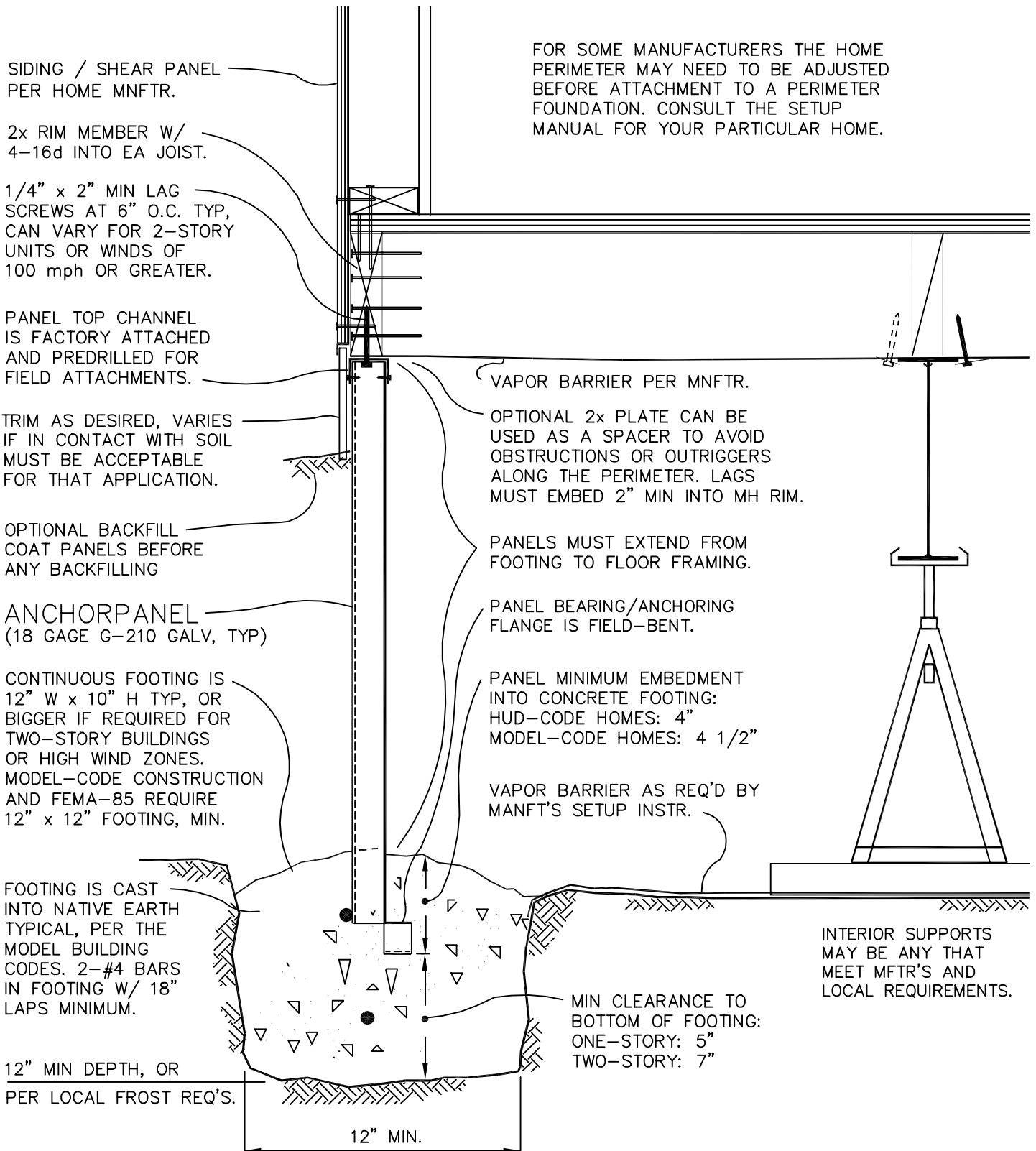


CUT-AWAY VIEW OF PANEL CAST INTO CONCRETE FOOTING

G-210 GALVANIZE FINISH PANELS MUST BE COATED IF BACKFILLED.

PANEL TO BE POSITIONED FOR CASTING INTO CONCRETE. VIEWED FROM THE INTERIOR.

ANCHORAGE FLANGE
 CONCRETE BEING PLACED
 CONCRETE FOOTING WITH REBAR

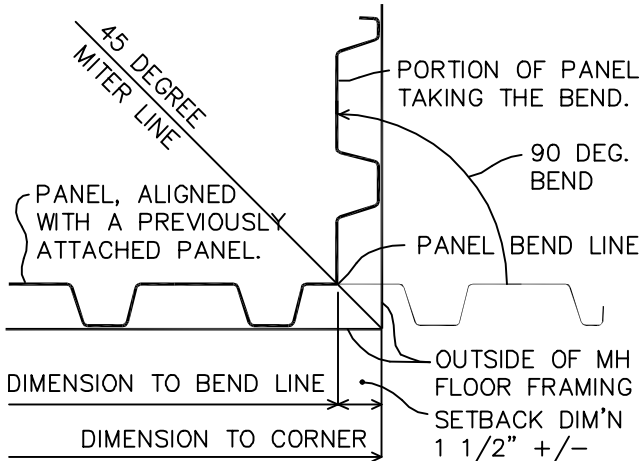


ANCHORPANEL TYPICAL PERIMETER INSTALLATION FOR HUD-CODE MANUFACTURED HOMES

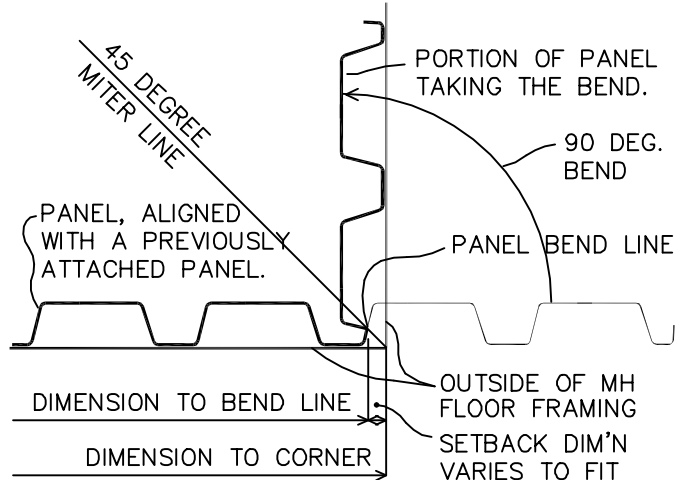
SEE THE INSTALLATION DESIGN FOR YOUR SPECIFIC LOCATION FOR MORE INFORMATION

BENDING PANELS AT BUILDING CORNERS

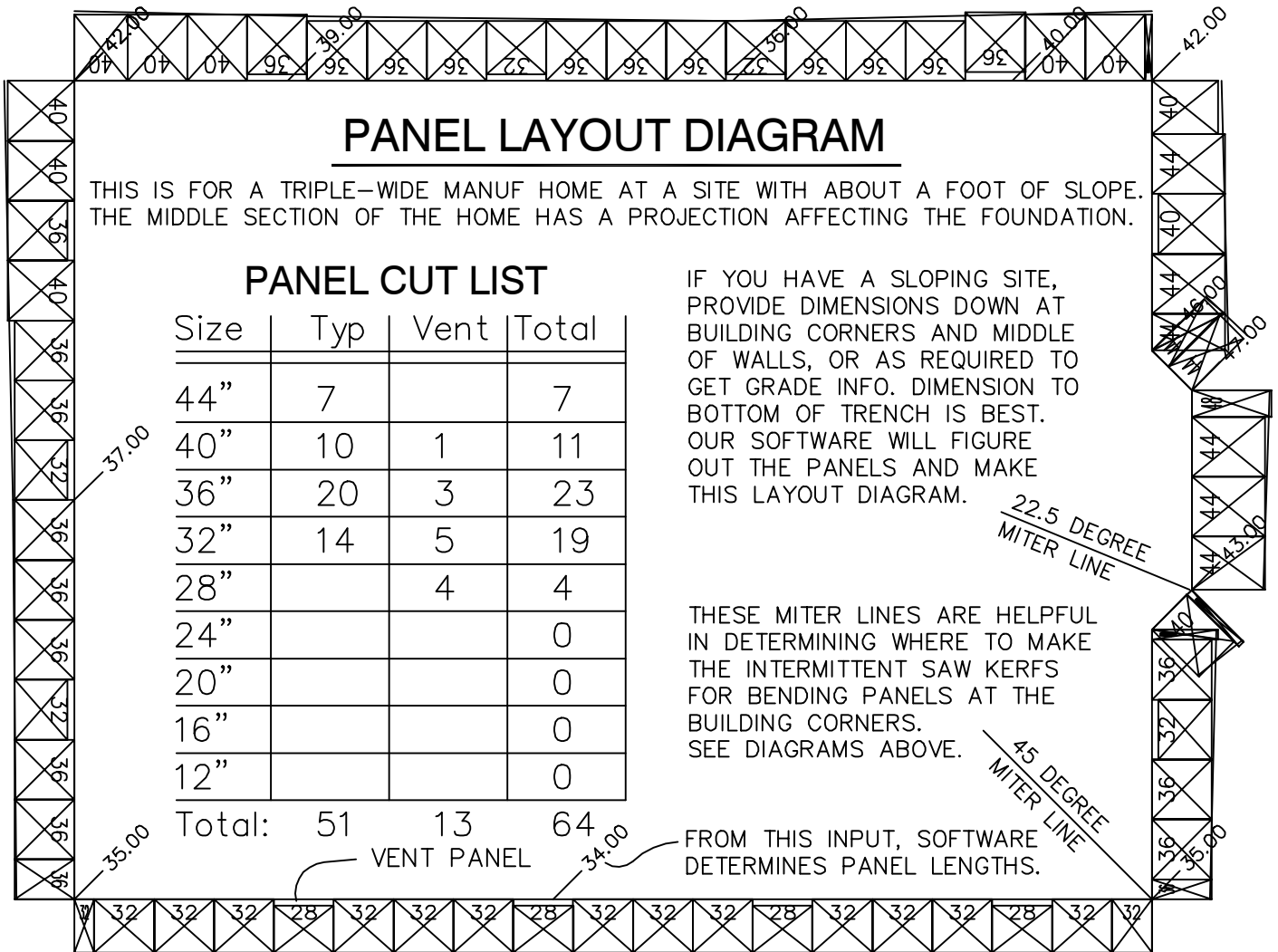
PANELS "WRAP AROUND" AT CORNERS, TYP. FOR THIS, SAW CUTS ARE MADE ALONG THE PANEL BEND LINE. THE CUT/BEND LINE LOCATION IS DETERMINED BY WHERE THE CORRUGATIONS INTERSECT THE MITER LINE. WHERE THE OUTER CORRUGATION FACE LANDS AT THE BUILDING CORNER, NO CORRECTION IS NECESSARY.



CASE 1: MITER LINE AT PANEL BACK



CASE 2: MITER LINE AT SIDE OF RIB

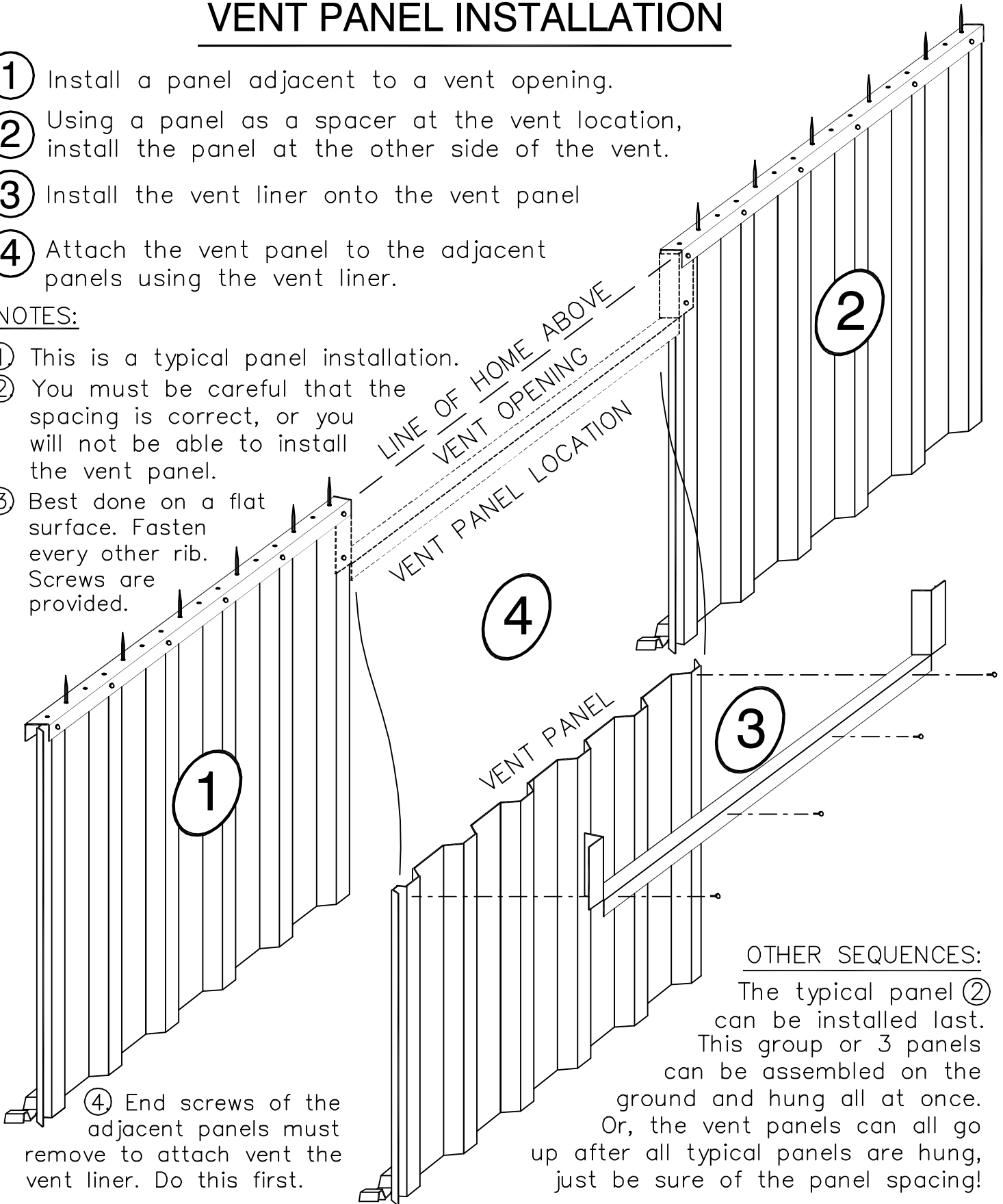


VENT PANEL INSTALLATION

- ① Install a panel adjacent to a vent opening.
- ② Using a panel as a spacer at the vent location, install the panel at the other side of the vent.
- ③ Install the vent liner onto the vent panel
- ④ Attach the vent panel to the adjacent panels using the vent liner.

NOTES:

- ① This is a typical panel installation.
- ② You must be careful that the spacing is correct, or you will not be able to install the vent panel.
- ③ Best done on a flat surface. Fasten every other rib. Screws are provided.



OTHER SEQUENCES:

The typical panel ② can be installed last. This group or 3 panels can be assembled on the ground and hung all at once. Or, the vent panels can all go up after all typical panels are hung, just be sure of the panel spacing!

④ End screws of the adjacent panels must remove to attach vent the vent liner. Do this first.

Vents are usually finished by making an opening in a trim board and sandwiching a screen between the trim board (Hardie Plank for example) and the foundation.