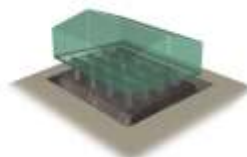
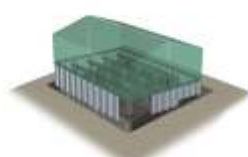




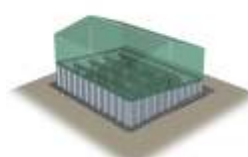
1. Prep Site



2. Set Units



3. Hang Panels



4. Place Concrete

ANCHORPANEL® PERIMETER FOUNDATION

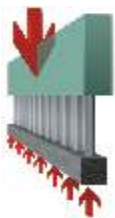
Sure, this cast-in-place permanent foundation is fast, easy, economical and FHA compliant. But some people also want to know about making that manufactured home look site-built...



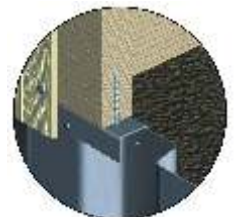
A traditional home sets nicely with the garage, and a modern home design feels very comfortable.



For homes with cement-lap siding, cover the installation with one more course. Make it look natural!



Efficient Grade Beam



Top Connection



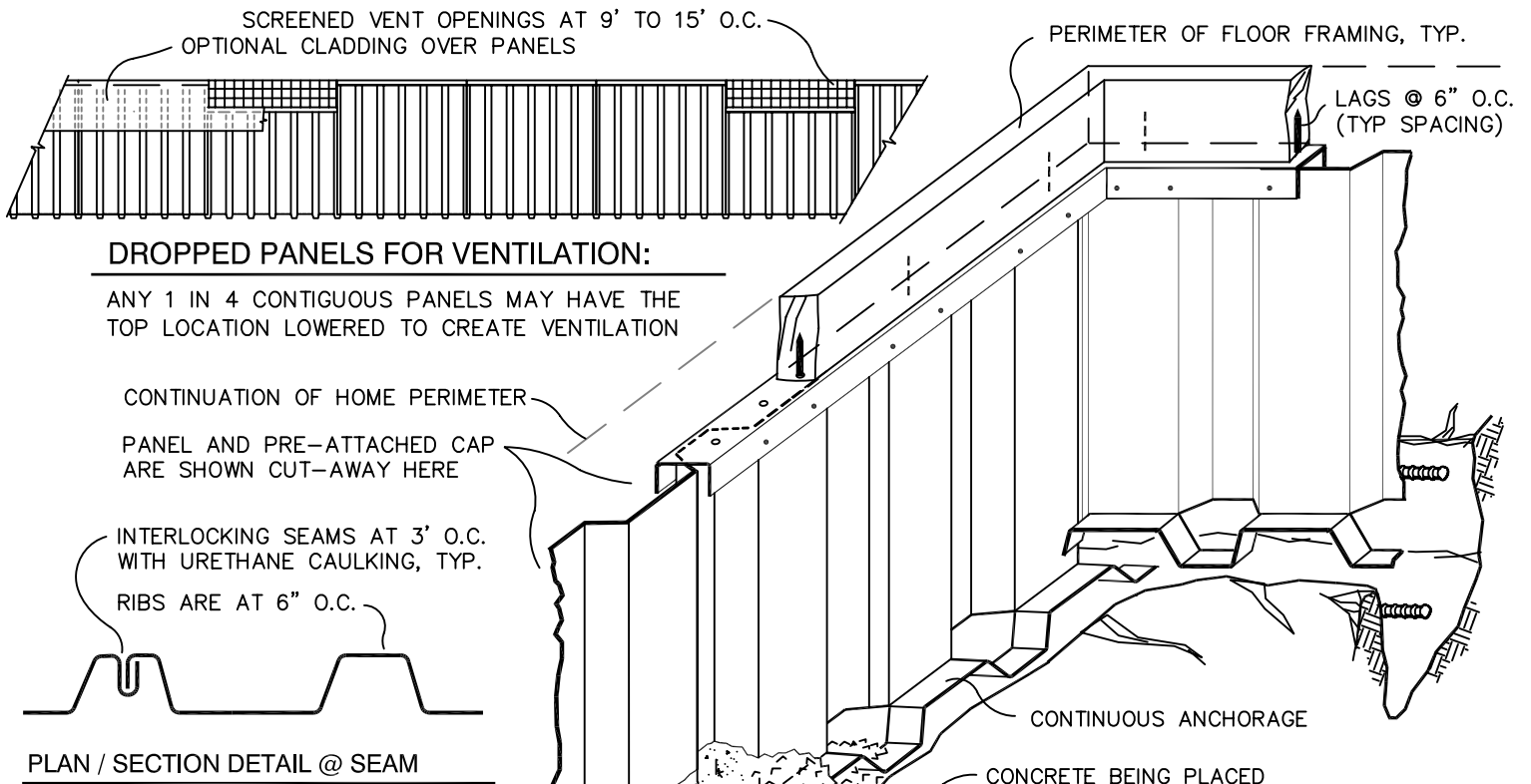
Bottom Anchorage

The foundation inside.....vs. the look outside. Imagine the typical MH look on this high corner lot.



FAST TRACK® Foundation Systems
Just add concrete™
PO Box 1520 Fort Bragg CA 95437

800 789-9694
www.AnchorPanel.com
US Patent Numbers: 5564235
5830378 6076320 6205725
6120723 6367764 6550213



DROPPED PANELS FOR VENTILATION:

ANY 1 IN 4 CONTIGUOUS PANELS MAY HAVE THE TOP LOCATION LOWERED TO CREATE VENTILATION

CONTINUATION OF HOME PERIMETER

PANEL AND PRE-ATTACHED CAP ARE SHOWN CUT-AWAY HERE

INTERLOCKING SEAMS AT 3' O.C. WITH URETHANE CAULKING, TYP.

RIBS ARE AT 6" O.C.

PLAN / SECTION DETAIL @ SEAM

VIEW FROM THE INTERIOR DURING CONCRETE PLACEMENT

THE TYPICAL PROCESS:

1. MEASURE FOR/ORDER PANELS (THEY RANGE FROM 12" TO 84" TALL IN 4" STEPS, 36" IS TYP)
2. PANELS SHIP TO JOBSITE. (2 LOW-COST PALLETS, TYP)
3. HANG PANELS FROM SET M.H. INST. REBAR, ACCESS, VENTS.
4. PLACE CONCRETE IN FOOTING. CHECK PANELS FOR PLUMB.
5. COAT OUTSIDE OF PANELS BEFORE BACKFILLING.
6. COMPLETE FINAL GRADING.

NOTES:

SITE MUST BE PREPARED AND TRENCHED FOR A FOUNDATION. MEASURE CAREFULLY FOR THE PANEL HEIGHTS (LENGTHS). OUR SOFTWARE DETERMINES LENGTHS FOR SLOPING SITES. INTERIOR SUPPORTS CAN BE ANY ALLOWED BY MH MNFTR. FOR MORE INSTALLATION INFO OR DVD, PLEASE CONTACT US.

THE CONSTRUCTION ABOVE CAN VARY TO ANY MATERIAL/METHOD.

CONCRETE FTNG WITH THE PANEL CAST-IN-PLACE

SIDING PER HOME MNFTR
 1/4" x 2" LAG SCREWS @ 6" O.C. TYP. (MUST EMBED 2" MIN INTO RIM JOIST)
 36" WIDE x 4" SCREENED OPENINGS (ARE MADE BY LOWERING PANELS). VENTS ARE AT 9' TO 15' O.C. TYP.

OPTIONAL CEMENT-BOARD CLADDING (MUST BE OK FOR SOIL CONTACT)

(OPTIONAL) BACKFILL NATIVE SOIL UP TO 3'

PANELS BELOW SOIL MUST BE COATED OR CEMENT-BOARD CLAD OVER GALV.

CONTINUOUS CONCRETE FOOTING WITH 2- #4 REBARS.

FLOOR SYSTEM AND INSULATION, ETC.

STEEL BEAM BY HOME MNFTR

ANCHORPANEL

HIGHLY-GALVANIZED=STEEL STRUCTURAL PANELS CAST INTO A CONTINUOUS PERIMETER GRADE-BEAM / FOOTING.

INT SUPPORTS PER HOME MNFTR AND/OR LOCAL REQUIREMENTS. (FOR OFF-FRAME HOMES SEE "MODULAR HOME" DESIGN INFO.)

BEARING / ANCHORAGE FLANGE

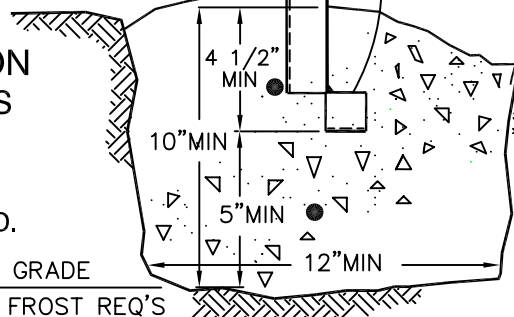
POLY BARRIER ON GRADE (AS PER HOME MNFTR.)

ANCHORPANEL®

PERMANENT PERIMETER FOUNDATION FOR HUD-CODE MANUFACTURED HOMES

THIS PERMANENT FOUNDATION DESIGN MEETS STATE, FHA, FEMA, AND MODEL-CODE REQ'S. PLEASE CONTACT US FOR MORE INFO OR A DVD.

12" MIN BELOW GRADE OR PER LOCAL FROST REQ'S



FAST TRACK®

FOUNDATION SYSTEMS
 800 789-9694
 ANCHORPANEL.COM