

INSTALLING THE ANCHORPANEL® FOUNDATION WITH MODULAR HOMES

This is the most efficient sequence for Model-Code Modular (Factory-Built) homes that arrive on removable trailers. (If trailers span the full width of units, a crane must be used, and the panels must be pre-set. See note below.) Homes built with an attached chassis can setup, and the foundation panels install, the same way as HUD-Code homes.

The Fastest Foundation
No Crane Required
Minimal Labor/Cost
No Foundation Misfits
Multi-Story Strength
Code & Lender Compliant



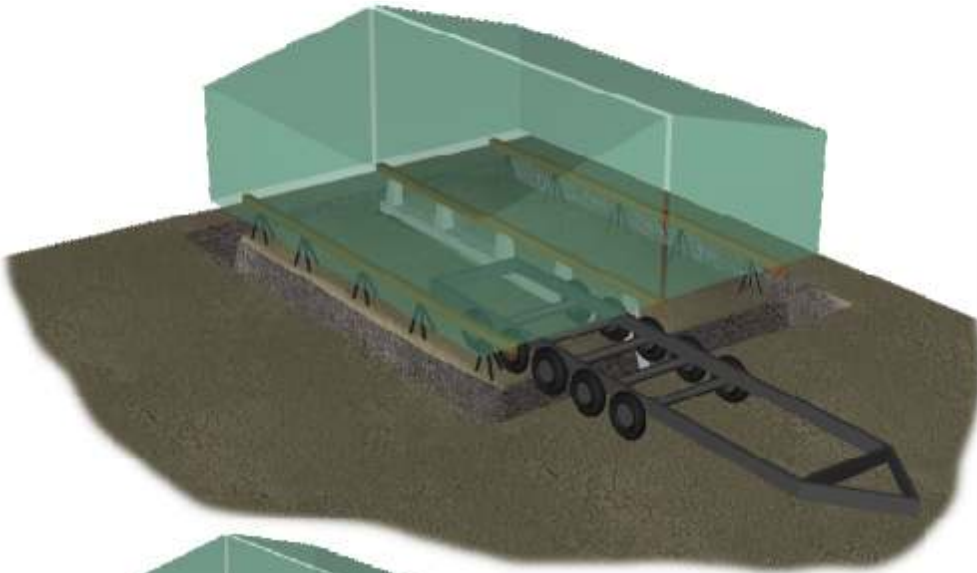
1. Prepare Site

Prepare the site per the requirements of the home manufacturer and the local building codes.



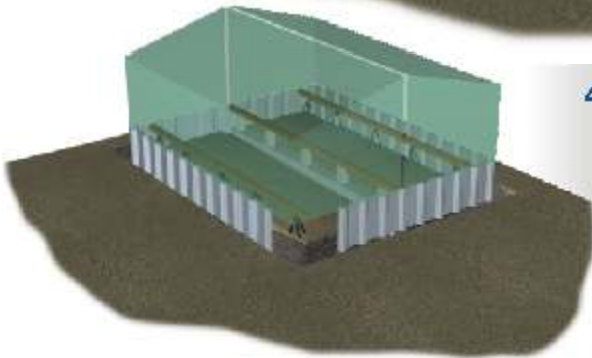
2. Provide Marriage-Line Foundation

Construct the permanent foundation and support along the marriage line(s). This needs to be stable enough to support each home unit before the perimeter foundation is completed.



3. Set Units / Remove Trailers

Set the home units in place with lines of temporary support near the outer edges (see detail on the other side of this sheet). Trailers then disengage from the homes. It may be necessary to first let air out of the tires or remove the axles to lower the trailers and get them out.



4. Hang Panels

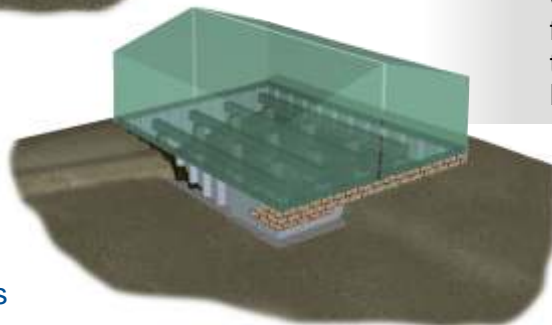
Panels are hung around the in-place units, just as for manufactured homes.

Alternatively, panels can install and cast in concrete around 3 sides of the home while it is supported on the trailers, and the 4th side can install after the trailers are removed. Temporary bracing may be required.

5. Place Concrete

Concrete is placed in the perimeter footings. After it has cured, the temporary supports are removed. Backfill or clad panels to suit.

Note: Panels can all be set with a guide-board and cast into concrete before arrival of the home. While more efficient than a conventional perimeter, this is not as efficient as the method described here, and can suffer the same mismatch problems that typical foundations have.

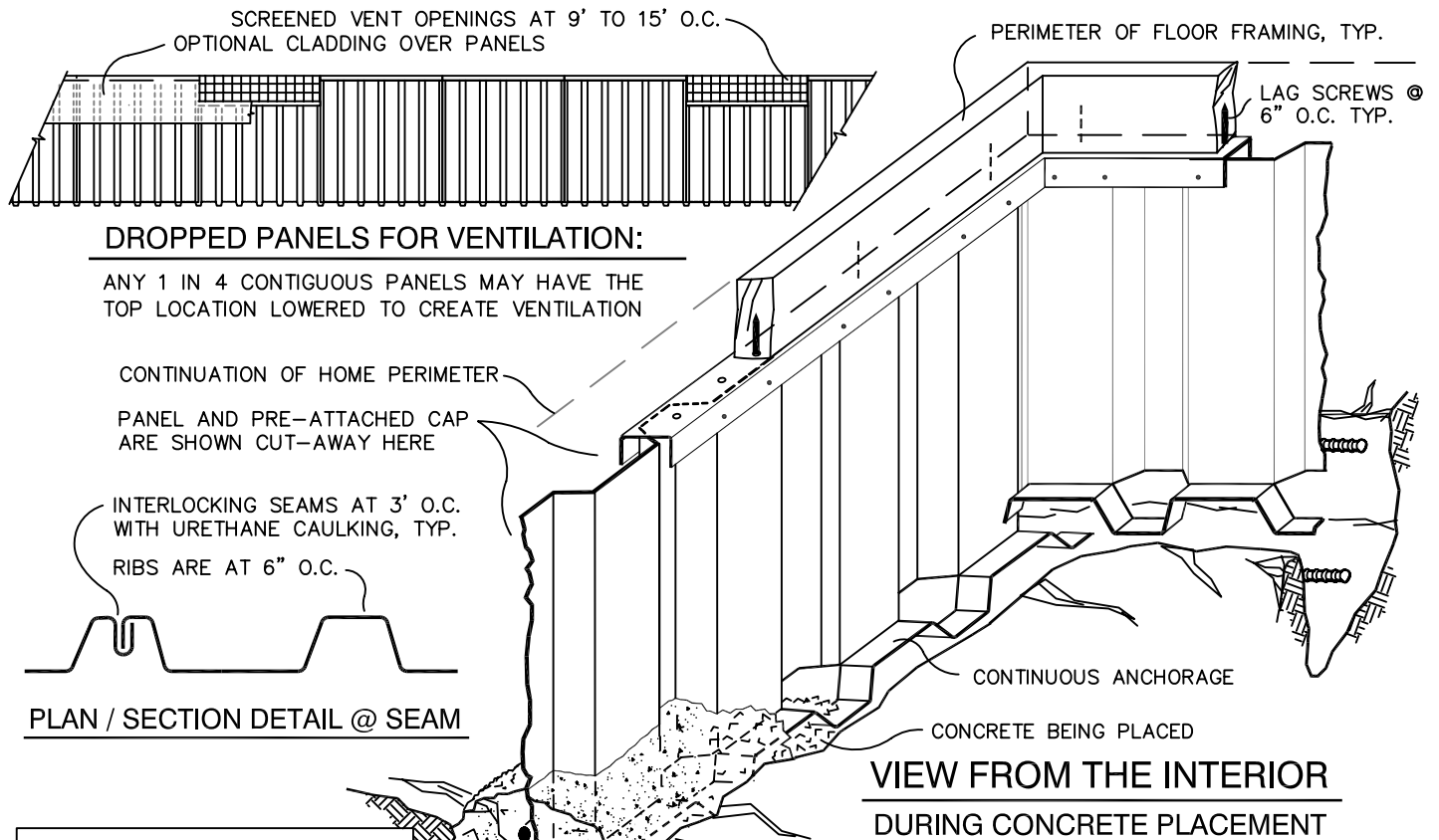


Fast Track® Foundation Systems

PO Box 1520, Fort Bragg, CA 95437

(800) 789-9694 AnchorPanel.com





DROPPED PANELS FOR VENTILATION:

ANY 1 IN 4 CONTIGUOUS PANELS MAY HAVE THE TOP LOCATION LOWERED TO CREATE VENTILATION

CONTINUATION OF HOME PERIMETER

PANEL AND PRE-ATTACHED CAP ARE SHOWN CUT-AWAY HERE

INTERLOCKING SEAMS AT 3' O.C. WITH URETHANE CAULKING, TYP.

RIBS ARE AT 6" O.C.

PLAN / SECTION DETAIL @ SEAM

VIEW FROM THE INTERIOR DURING CONCRETE PLACEMENT

THE TYPICAL PROCESS:

1. MEASURE FOR/ORDER PANELS (THEY RANGE FROM 12" TO 84" IN 4" STEPS, 36" IS COMMON).
2. PANELS SHIP TO JOBSITE. (2 LOW-COST PALLETS, TYP)
3. HANG PANELS FROM SET HOME (SEE OTHER PAGE FOR SEQ.) INST. REBAR, ACCESS, VENTS.
4. PLACE CONCRETE IN FOOTING. CHECK PANELS FOR PLUMB.
5. COAT OUTSIDE OF PANELS BEFORE BACKFILLING.
6. COMPLETE FINAL GRADING.

NOTES:

SITE MUST BE PREPARED AND TRENCHED FOR A FOUNDATION. MEASURE CAREFULLY FOR THE PANEL HEIGHTS (LENGTHS). OUR SOFTWARE DETERMINES LENGTHS FOR SLOPING SITES. INTERIOR SUPPORTS CAN BE ANY ALLOWED BY MH MNFTR. PRECOATED PANELS ARE AVAIL, TO AVOID THE FIELD COATING.

CONCRETE FTNG WITH THE PANEL CAST-IN-PLACE

SIDING PER HOME MNFTR

1/4" x 2" LAG SCREWS @ 6" O.C.

36" WIDE x 4" SCREENED OPENINGS (ARE MADE BY LOWERING PANELS). VENTS ARE AT 9' TO 15' O.C. TYP.

(OPTIONAL) CEMENT-BOARD PERIMETER TRIM (MUST BE OK FOR SOIL CONTACT)

(OPTIONAL) BACKFILL NATIVE SOIL UP TO 2'-6"

ANCHORPANEL

PANELS MUST BE PROTECTED, PRE- OR SITE-COATED OVER GALV.

CONTINUOUS CONCRETE FOOTING WITH 2- #4 REBARS.

THE CONSTRUCTION ABOVE CAN VARY TO ANY MATERIAL/METHOD.

FLOOR SYSTEM AND INSULATION

TEMPORARY BEAM FOR SETUP

G210-GALVANIZED-STEEL STRUCTURAL PANELS CAST INTO A CONTINUOUS PERIMETER GRADE-BEAM / FOOTING.

TEMPORARY SUPPORTS FOR SETUP

THIS PROCESS CAN BE PER THE HUD-CODE SETUP IF THE HOME HAS A STEEL CHASSIS.

SECTION VIEW

BEARING/ANCHORAGE FLANGE
POLY BARRIER ON GRADE (AS PER HOME MNFTR.)

ANCHORPANEL®

PERMANENT PERIMETER FOUNDATION FOR A MODEL-CODE MODULAR HOME

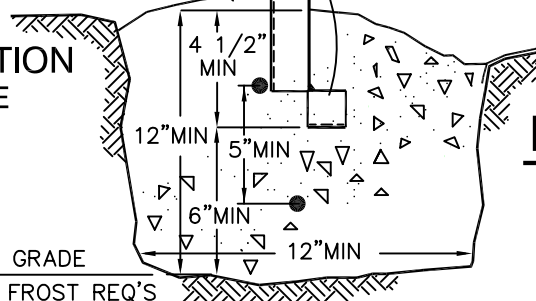
("FACTORY HOME", "UBC" OR "IBC" HOME)

THIS PERMANENT FOUNDATION MEETS ALL MODEL-CODES, HUD/FHA, AND FEMA-85.

ICC-ER TESTED

12" MIN BELOW GRADE

OR PER LOCAL FROST REQ'S



FAST TRACK®

FOUNDATION SYSTEMS

800 789-9694

PLEASE CONTACT US FOR MORE INFO OR A DVD.